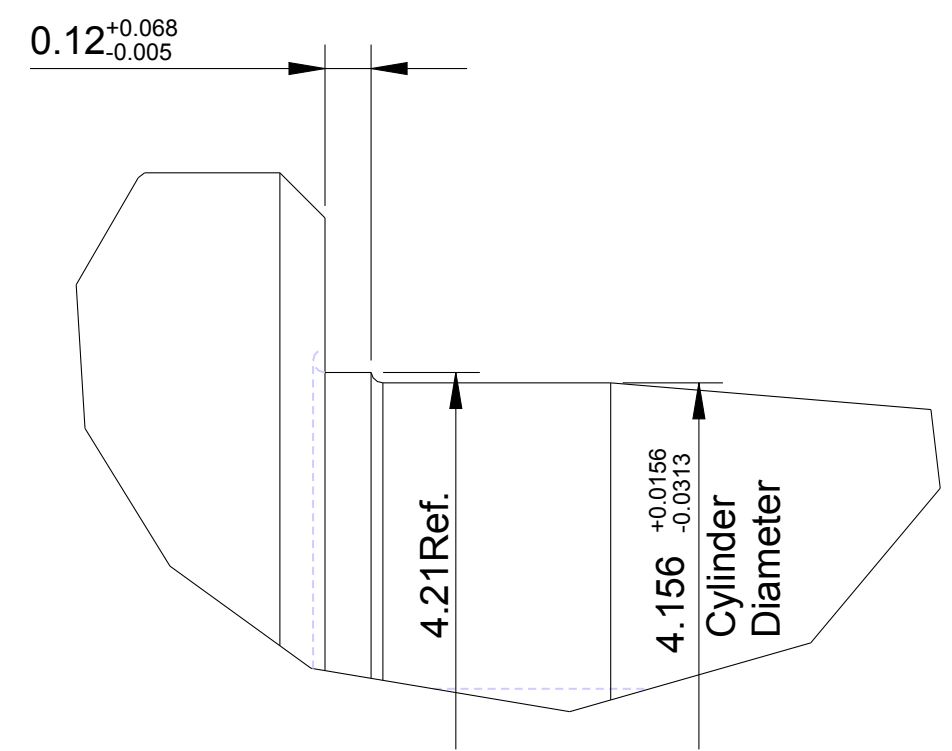


4 TPI - V0.038R Thread Form
 2.0" Taper per foot $+0.030$ / -0.00
 Pitch Tolerance ± 0.0015 per inch, 0.004 max for length of thread



DETAIL A
 SCALE 2.000

Notes:
 - All dimensions in inches unless noted otherwise
 - Brake all sharp edges

| Revision #: | Revision Description: | Date: |
|-------------|-----------------------|-------|
| | | |

This drawing and data contained are information that is the confidential property of Command Energy Services. This drawing and information contained in the drawing shall not be reproduced, copied, disclosed to others, or used whole or in part for any purpose without the express written consent of Command Energy Services. This drawing is loaned in confidence with the understanding that it shall be returned upon request.

| | | | |
|--|--|----------------------|------|
| DESCRIPTION: CDS40 Pin Inspection | | COPY | APPR |
| PART NAME: CDS40_PIN | | DES | |
| DRAWN: <i>Kirk Parker</i> DATE: <i>Jan 31, 11</i> CHECKED: DATE: | | ENG | |
| THIRD ANGLE PROJECTION | | MFG | |
| | | CM | |
| DRAWING: CDS40_PIN_INS SIZE: C | | COMPUTER GENERATED | |
| SCALE: 1.00 : 1 | | SHEET: 1 of 1 | |

