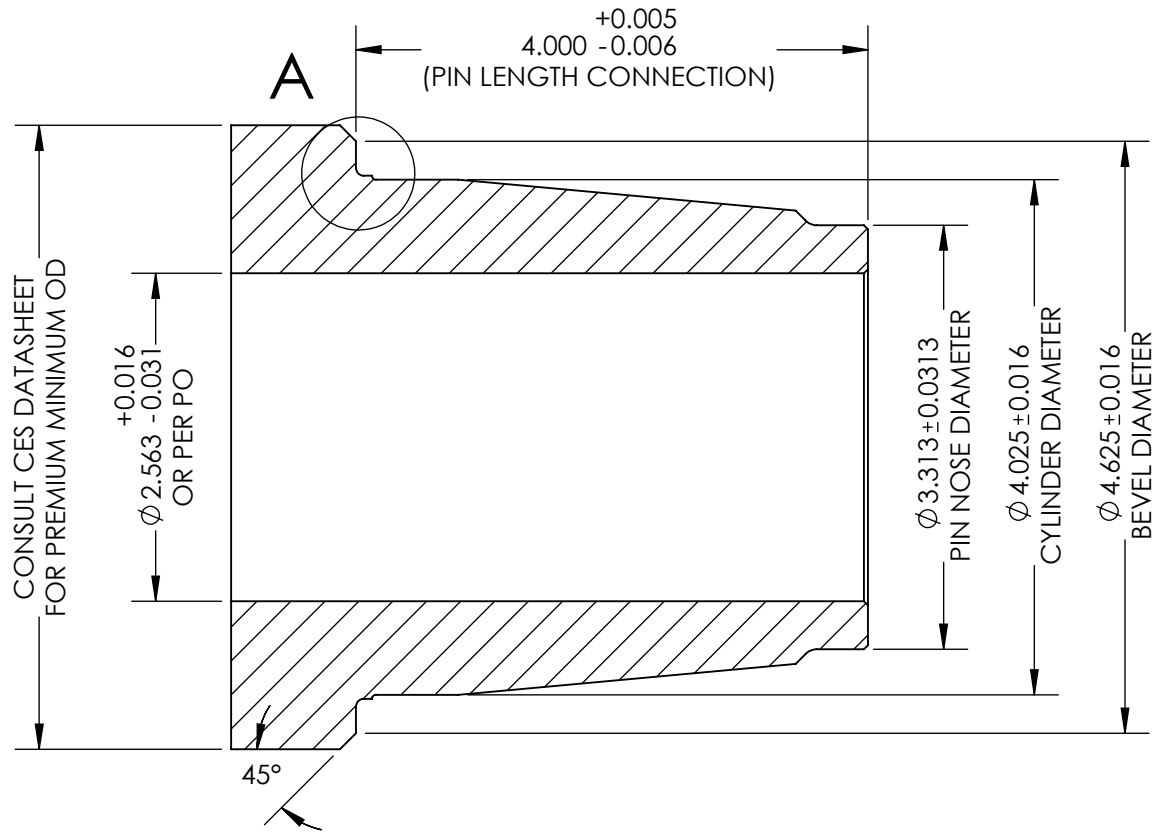


**DETAIL A
SCALE 2 : 1**

THREADFORM REFERENCE INFORMATION:
 API V0.038R THREADFORM
 4 THREADS PER INCH
 2.0" TAPER PER FOOT



CONSULT CES DATASHEET
 FOR PREMIUM MINIMUM OD

- NOTES: 1. DIMENSIONS WITHOUT TOLERANCES ARE FOR REFERENCE INFORMATION ONLY
 2. OD AND ID MEASUREMENTS SHALL BE REFERENCED PER PO AND CES DATASHEET
 3. ALL DIMENSIONS IN INCHES UNLESS NOTED OTHERWISE
 4. ALL CHAMFERS/BREAKS 0.031 +/-0.016 @ 45 DEGREES

	NAME	DATE
DRAWN	ZRV	02/18/14
CHECKED	GB	02/18/14
ENG APPR.		
MFG APPR.		
Q.A.		

COMMENTS:
 DRAWING TO BE USED FOR FIELD INSPECTION ONLY. THIS IS FOR USED, PHOSCOATED, COLD-ROLLED, AND POST-MAKE-AND-BREAK CONNECTIONS ONLY



DWG. NO.
 CET39 Pin Field Inspection Drawing

REV
 1

SCALE: 1:4

SHEET 1 OF 1